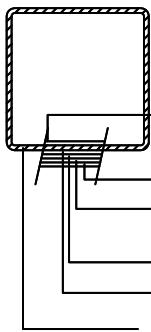
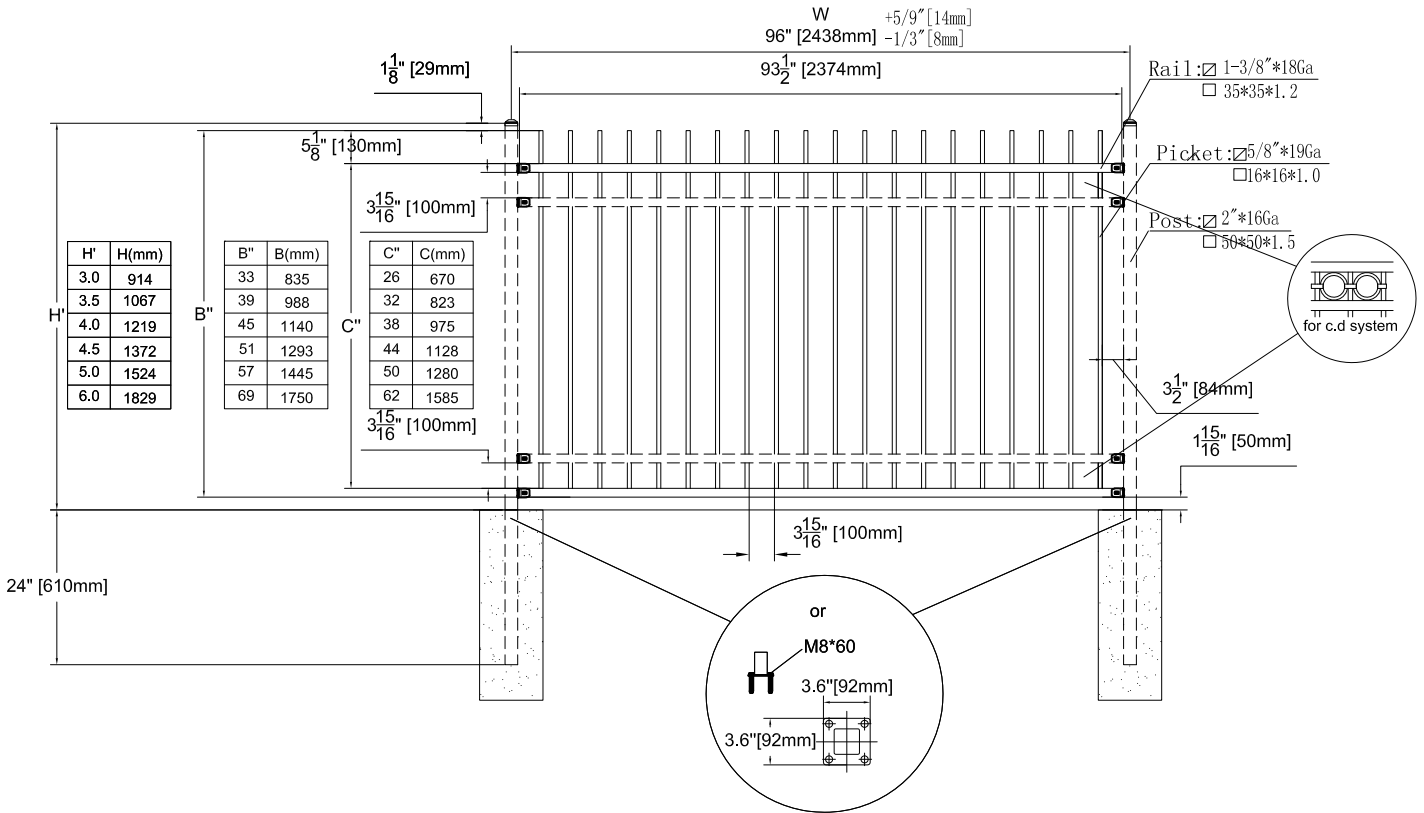


Post size		*W	
in	mm	in	mm
□ 2"	50	96"	2438
□ 2-1/2"	63.5	96-1/2"	2452
□ 3"	75	97	2463



Galvanized (H.D)

Glossy Polyester Top Coat

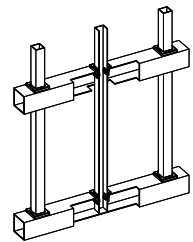
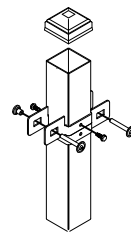
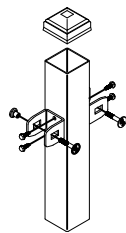
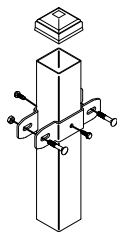
Zinc-Rich Epoxy Primer

(Customers choose)

Non-Phosphorus Coating

Galvanized (H.D)

Steel



ITEM	Size(mm)	Size(")	Material	Q'Ty
Picket	16*16*1.0	5/8*5/8*19Ga	Q195	
Rail	35*35*1.2	1 3/8*1 3/8*18Ga	Q235	
Post	50*50*1.5	2*2x16Ga	Q235	
Design	A. Z	Standardization	D.FF	
Drawing	D.FF	Approve	A. Z	
Revise	X.G	Date:08-31-2015		
Auditing	M.ZQ			

CLIENT			
USA			
Product description			
(E) *R**08-K (35N)			
REVISIONS	DESCRIPTION	DATE	APPRO



XCEL Fence Inc
 910 E Cedar St.
 Ontario, CA 91761 USA
 Tel: (866)392-0808
 Fax: (909)392-0999
 www.xcelfence.com
 E-mail:info@xcelfence.com