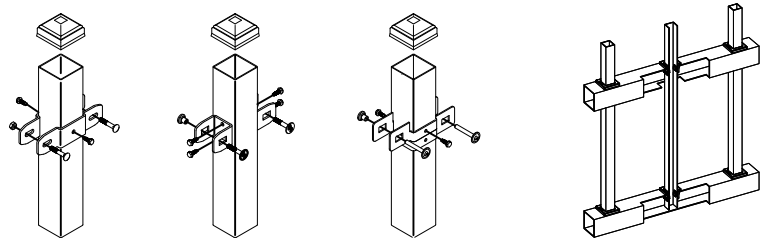
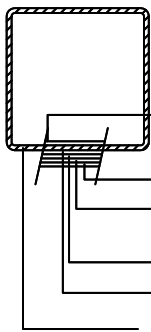
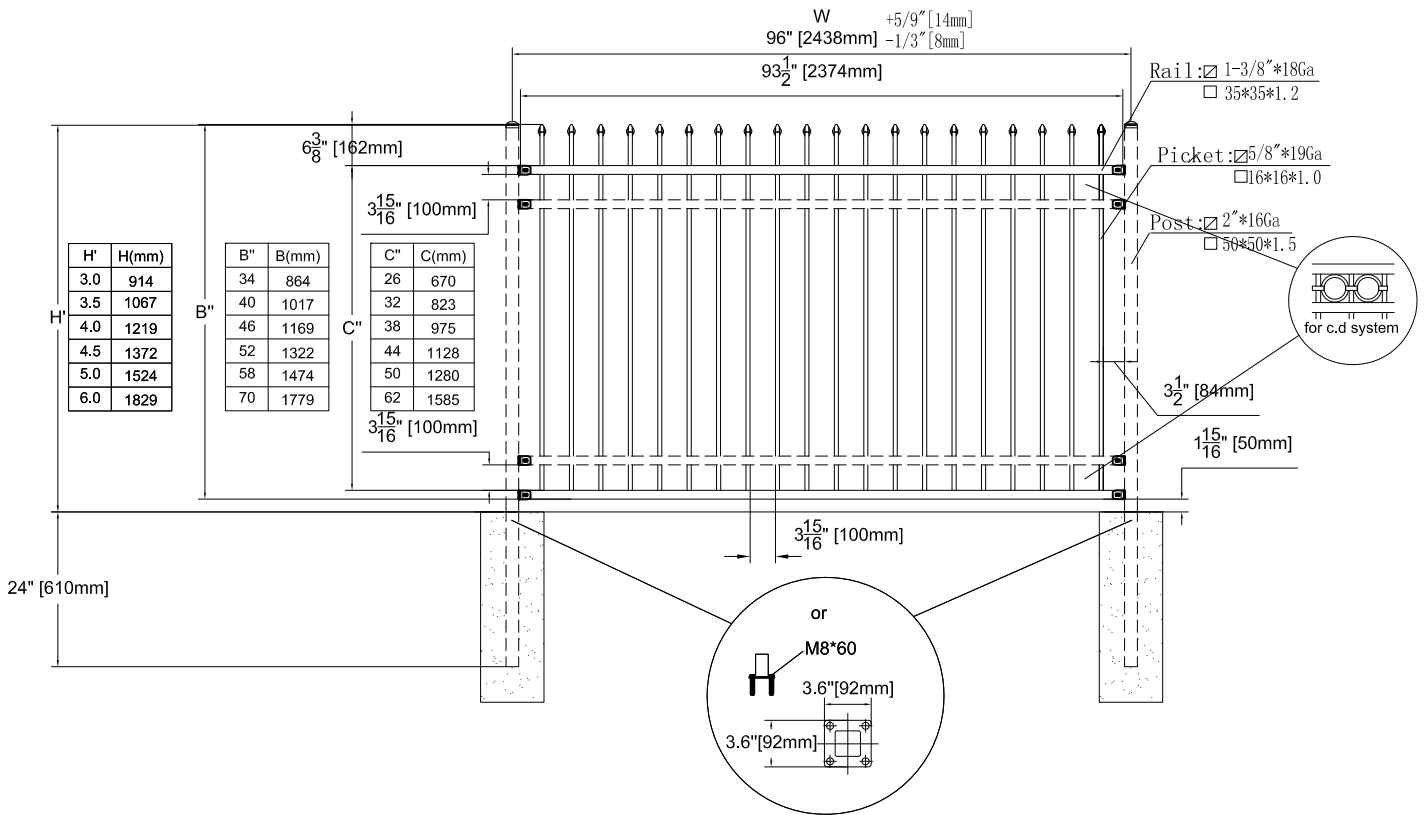


Post size		*W	
in	mm	in	mm
□ 2"	50	96"	2438
□ 2-1/2"	63.5	96-1/2"	2452
□ 3"	75	97	2463



ITEM	Size(mm)	Size(")	Material	Q'Ty	CLIENT USA Product description (E) *R**08-N (35N)	
Picket	16*16*1.0	5/8*5/8*19Ga	Q195			
Rail	35*35*1.2	1 3/8*1 3/8*18Ga	Q235			
Post	50*50*1.5	2*2*16Ga	Q235			
Design	A. Z	Standardization	D.FF			
Drawing	D.FF	Approve	A. Z			
Revise	X.G					
Auditing	M.ZQ	Date:08-31-2015				
			REVISIONS	DESCRIPTION	DATE	APPRO



XCEL Fence Inc
910 E Cedar St.
Ontario, CA 91761 USA
Tel: (866)392-0808
Fax: (909)392-0999
www.xcelfence.com
E-mail: info@xcelfence.com